

600S/660SJ

TELESCOPIC BOOM LIFTS



- Rugged all-terrain telescopic boom lifts
- Powerful 4 wheel drive
- Ultra-tight turning radius
- Fully proportional boom functions
- Simple to operate and easy to maintain

 **snorkel**
www.snorkellifts.com

TELESCOPIC BOOM LIFTS

600S/660SJ

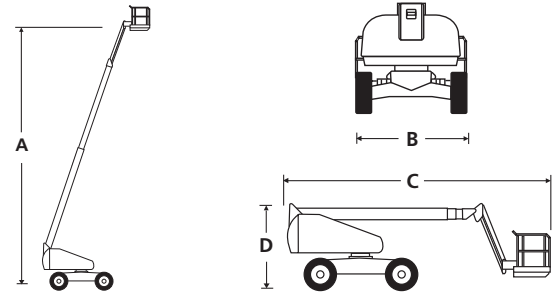
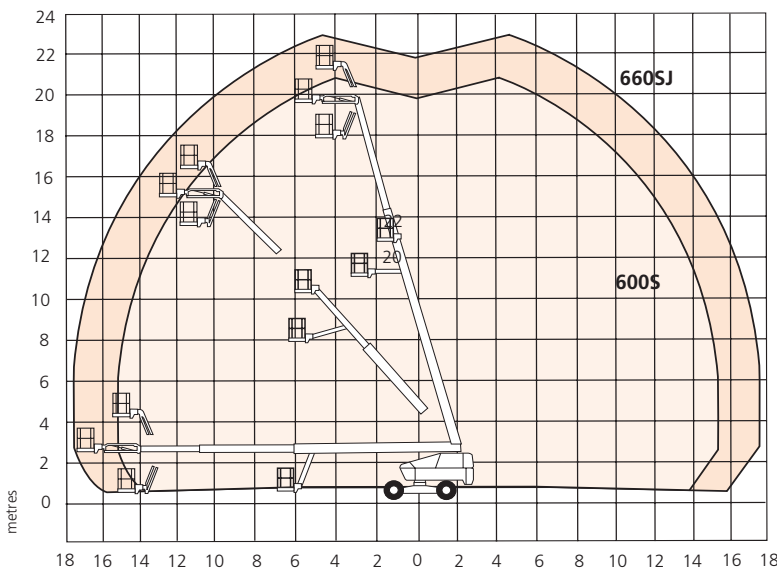
DIMENSIONS	600S**	660SJ**
Max. working height	20.4m	22.3m
Max. platform height (A)	18.4m	20.3m
Max. working outreach	15.9m	18.0m
Platform size	2.44m x 0.91m	2.44m x 0.91m
Overall width (B)	2.38m	2.38m
Transport length	8.5m	8.5m
Overall length (C)	9.2m	10.5m
Transport height	3.3m	3.3m
Stowed height (D)	2.5m	2.5m
Ground clearance	317mm	317mm

PERFORMANCE	600S**	660SJ**
Platform capacity (SWL)	272kg	272kg
Max. drive height	18.4m	20.3m
Max. wind speed	12.5m/s	12.5m/s
Max. drive speed (stowed)	5.6km/h	5.6km/h
Max. drive speed (elevated)	0.96km/h	0.96km/h
Jib length	n/a	2.0m
Jib arc	n/a	135° (+70°/-65°)
Platform rotation	150°	150°
Turret rotation (continuous)	360°	360°
Tailswing	1.2m	1.2m
Gradeability	45%	43%
Inside turning radius	1.65m	1.65m
Outside turning radius	4.8m	4.8m
Tires	355/55 D625 foam filled lug	
Controls	Proportional drive, raise, slew, extend, jib & platform rotate	
Drive system	4 wheel drive	4 wheel drive

POWER	600S**	660SJ**
Power source	Kubota V2403T engine 44kW/59hp	
Auxiliary power unit	12V DC	12V DC

WEIGHT	600S**	660SJ**
Weight	10,659kg	13,114kg

WORKING ENVELOPE



STANDARD FEATURES

- Snorkel Guard™ secondary guarding system
- Oscillating axle
- 2.0m 135° jib (660SJ)
- Hydraulic platform rotation
- Four wheel drive
- All proportional controls
- Swing-out engine tray
- Horn
- Motion alarm
- Power line to platform
- Tilt alarm & cut-out
- DC emergency operation
- Tri-entry platform
- Flashing amber light
- Hour meter & onboard diagnostic display
- 2 year parts & labour, 5 year structural warranty
- CE approved

OPTIONS

- Special paint colours
- Airline to platform
- Non-marking tyres
- Dual fuel
- AC generator 110V/240V
- Aircraft package
- Deluxe aircraft package
- Cold weather package
- Extreme cold weather package
- Extreme environment package
- Light package
- Tow kit
- Glazier package
- 12k Generator package
- 12k Generator/Welder package
- Environmental hydraulic oil

snorkel www.snorkellifts.com

Vigo Centre, Birtley Road,
Washington, Tyne & Wear,
NE38 9DA, U.K.

t: +44 (0) 845 1550 057
e: sales@snorkellifts.com