

SR626

COMPACT ROUGH TERRAIN TELEHANDLER



- Full-time 4 wheel drive
- Fully enclosed cab
- Power assisted steering
- Proportional joystick controls
- Simple to operate & maintain

 **snorkel**

COMPACT ROUGH TERRAIN TELEHANDLER

SR626

CAPABILITIES SR626

Max. lift capacity	2,600kg
Max. lift height (A)	5.79m
Max. forward reach	3.2m

DIMENSIONS

Width (B)	1.89m
Stowed height (C)	1.9m
Length to fork face (D)	4.0m
Wheelbase	2.5m
Ground clearance	220mm

PERFORMANCE

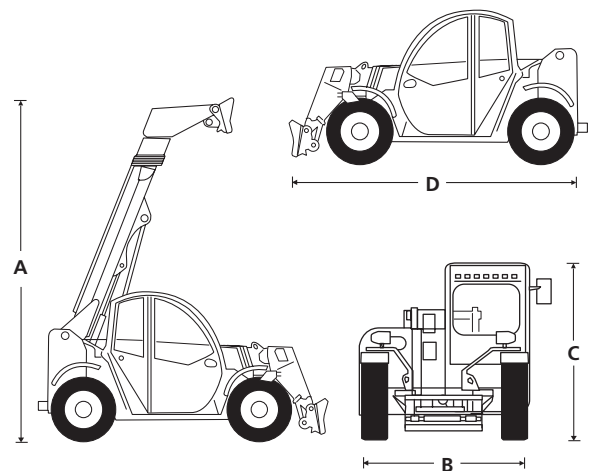
Hydraulic flow (per minute)	70L
Hydraulic pressure	230bar
Hydraulic oil capacity	70L
Fuel capacity	80L
Outside turning radius	3.25m
Tires	12 x 16.5

POWER

Power source	Yanmar 51.3kW - Tier 4F diesel
--------------	--------------------------------

WEIGHT

Weight	4,700kg
--------	---------



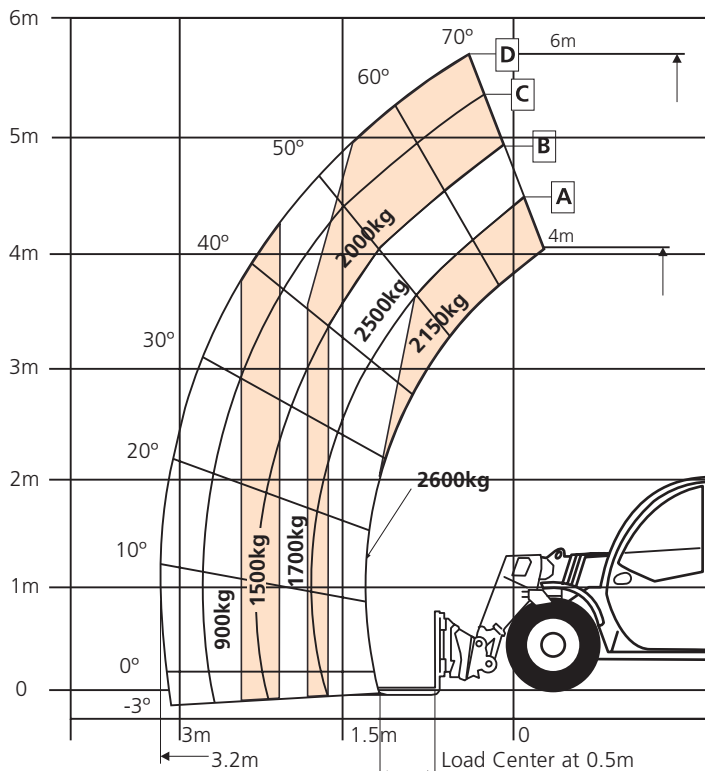
STANDARD FEATURES

- Easy access to components for servicing
- Full time 4 wheel drive
- 4 wheel steer
- Selectable front, crab & coordinated steering modes
- Auxillary hydraulic circuit on the boom
- Variable speed hydrostatic drive
- Fender (set of 4)
- Fully enclosed cab
- Proportional joystick controls
- Adjustable steering column
- Illuminated gauge and switch panels
- Colour LCD display with machine & engine diagnostics
- Adjustable suspension seat
- Flashing beacon
- Road lights
- 2 year parts & labour, 5 year structural warranty
- CE approved

OPTIONS

- Work lights on boom (2)
- Front and rear work LED lights

LOAD CHART



snorkel www.snorkellifts.com

Vigo Centre, Birtley Road,
Washington, Tyne & Wear,
NE38 9DA, U.K.

t: +44 (0) 845 1550 057
e: sales@snorkellifts.com