

# SR1745

## ROUGH TERRAIN TELEHANDLER



- Full-time 4 wheel drive
- Fully enclosed cab
- Power assisted steering
- Proportional joystick
- Simple to operate & maintain

 **snorkel**  
[www.snorkellifts.com](http://www.snorkellifts.com)

# ROUGH TERRAIN TELEHANDLER

# SR1745

## CAPABILITIES SR1745

Max. lift capacity	4,535kg
Max. lift height (A)	16.4m
Max. forward reach	12.6m

## DIMENSIONS

Overall width (B)	2.3m
Stowed height (C)	2.56m
Length to fork face (D)	6.6m
Wheelbase	2.95m
Ground clearance	350mm

## PERFORMANCE

Max. drive speed	30km/h
Raise/lower time	16/10.8 sec
Frame levelling	11°
Hydraulic flow (per minute)	120L
Hydraulic pressure	230bar
Hydraulic oil capacity	150L
Fuel capacity	120L
Outside turning radius	4.2m
Tyres	445/65 - 22.5"

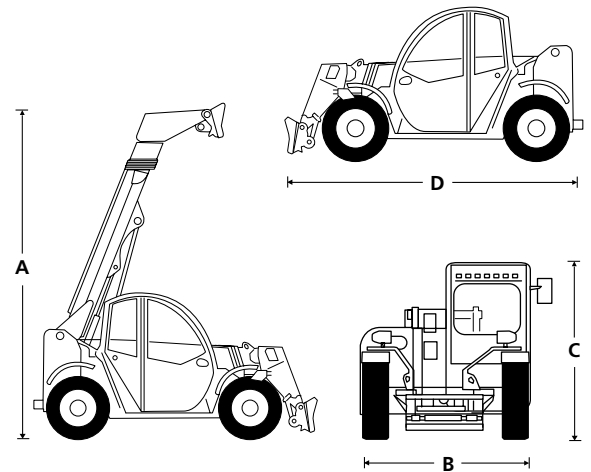
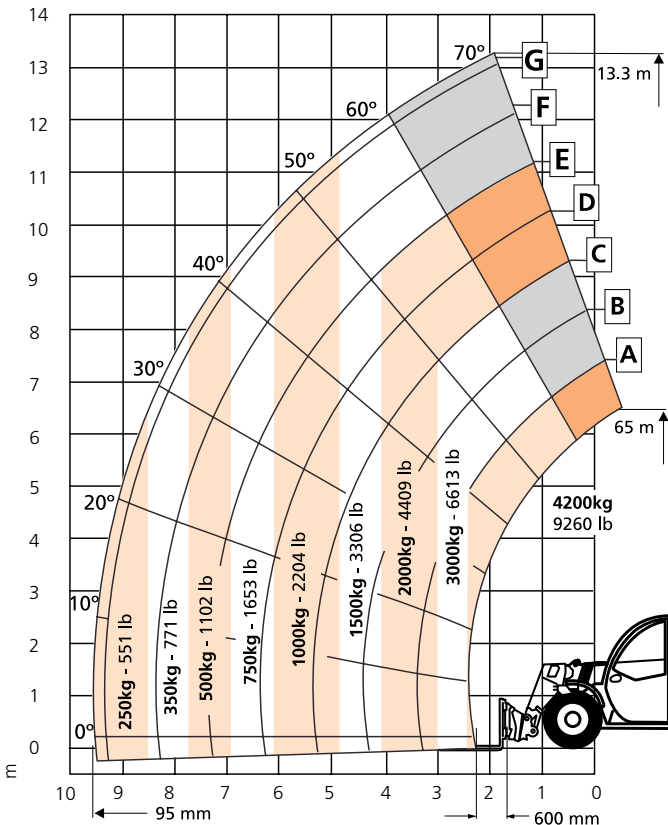
## POWER

Power source	Deutz TCD 3.6L Tier 4 Final 74.4kW
--------------	------------------------------------

## WEIGHT

Weight	12,180kg
--------	----------

## LOAD CHART



## STANDARD FEATURES

- Full time 4 wheel drive
- 4 wheel steer
- Selectable front, crab & coordinated steering modes
- Auxiliary hydraulic circuit on the boom
- Variable speed hydrostatic drive
- Fender (set of 4)
- Fully enclosed cab with air conditioning
- Proportional joystick controls
- Adjustable steering column
- Illuminated gauge and switch panels
- Color LCD display with machine & engine diagnostics
- Block heater
- Adjustable suspension seat
- Flashing beacon
- Road lights
- 1.5m carriage
- 1.5m forks
- Work lights on boom (2)
- 2 year parts & labor, 5 year structural warranty
- CE approved

## OPTIONS

- Front and rear work LED lights

**snorkel** [www.snorkellifts.com](http://www.snorkellifts.com)

Vigo Centre, Birtley Road,  
Washington, Tyne & Wear,  
NE38 9DA, U.K.

t: +44 (0) 845 1550 057  
e: sales.emea@snorkellifts.com